



Natural Gas Matters

IDEAS AND INSIGHTS FROM YOUR NATURAL GAS SERVICE PROVIDER



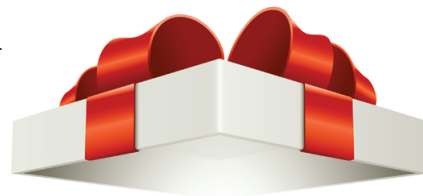
'Tis the Season to Be Giving

The holidays are a special time to spread joy and give gifts to friends and family. This year, why not spread some joy to those in need by giving to *Share The Warmth*? It's a special way to help those in your community who might face difficulties paying their energy bills.

Share The Warmth is a partnership between Kansas Gas Service and The Salvation Army that provides energy assistance. It helps Kansans facing financial emergencies pay their home-heating costs throughout the winter. *Share The Warmth* is available to residents of communities served by Kansas Gas Service and helps provide relief for those in need.

The program helps senior citizens, individuals with disabilities and those whose immediate financial resources simply cannot cover their home-heating expenses. Your contribution to *Share The Warmth* goes directly into a fund administered by The Salvation Army that makes payments to the utility or fuel supplier on behalf of the person receiving assistance. Donations cover the cost of any home-heating fuel, not just natural gas. It makes no difference – the goal is to keep people warm.

Giving Is Easy: You may contribute by adding an extra amount to your natural gas bill payment and checking the *Share The Warmth* box on your payment coupon. You also may designate a fixed amount to be added to your monthly bill or round up your bill to the next whole-dollar amount with the additional money going to *Share The Warmth*. You may contribute online at www.kansasgasservice.com or fill out the form on the back of this newsletter and include it with your bill payment.



Please join us as we help keep families warm this winter by adding your gift to *Share The Warmth*.



Stay Safe in Snow and Sleet



The accumulation of snow and ice increases the potential for damage to natural gas meters, regulators and other above-ground pipeline facilities. Snow and ice should be cleared from exhaust and combustion air vents of natural gas appliances to keep them operating smoothly and prevent carbon monoxide from entering homes and other structures. Extreme care should be taken when removing ice or snow from such vents: when possible, use a broom instead of a shovel to avoid damage, and never stand or climb on unsafe ground or surfaces to reach vents.

Always remember, if you smell a pungent or rotten egg-like odor in or around your home, in your neighborhood or at work, it may be the result of a natural gas leak.

Leave the area immediately and call 911 or Kansas Gas Service from a telephone away from the area: 1-888-482-4950.



Share The Warmth ...Kansans Helping Kansans

Complete the contribution form below and enclose it with your bill payment.



Here's how to contribute to Share The Warmth – Please choose one:

- ☐ I would like to ROUND UP my monthly bill payment to the next whole dollar (not to exceed \$1).

NAME _____

- ☐ I would like to contribute a FIXED AMOUNT each month to *Share The Warmth* in the amount of

ADDRESS _____

\$_____.

CITY _____

ZIP _____

- ☐ I would like to make a Share The Warmth contribution directly to The Salvation Army (make check payable to The Salvation Army, noting "*Share The Warmth*" in the memo line).

18-DIGIT KANSAS GAS SERVICE
CUSTOMER ACCOUNT NUMBER _____

For more information, call The Salvation Army at 1-877-566-2769, Ext. 402. You may also support Share The Warmth through the Kansas Gas Service automated telephone system at 1-800-794-4780 or online at www.kansasgasservice.com. Be sure to have your account number ready.